

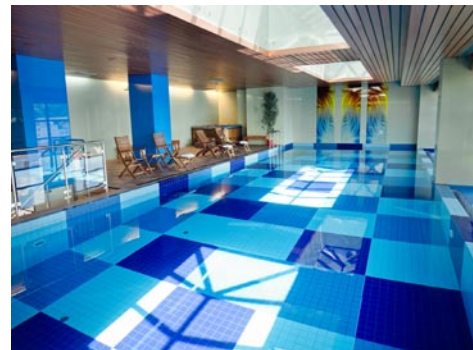
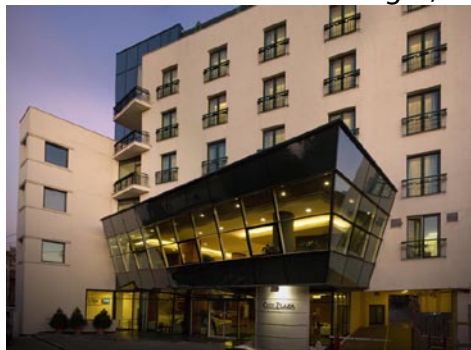
Hotel City Plaza 4/5*

4* single room: 90 euro/night, BB

4* double room: 100 euro/night, BB

5* single room: 110 euro/night, BB

5* double room: 120 euro/night, BB

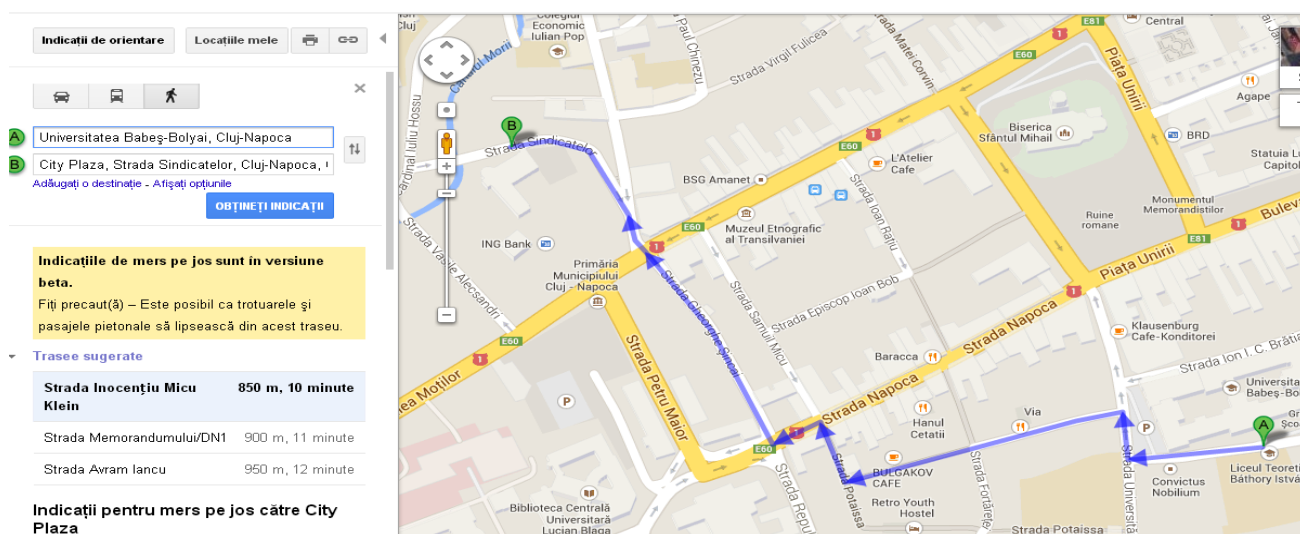


Centrally located in Cluj-Napoca on a quiet street, close to the main historical landmarks, the City Hall and the Central Park, City Plaza Hotel offers free access to its spa and fitness area including a swimming pool with panoramic views, free high-speed WiFi and free private secured parking.

Each unit at City Plaza features unique decorations combining modern and traditional design. Facilities inside include air conditioning, flat-screen TVs, a minibar, a safe and complimentary tea and coffee. Rooms fitted for disability access are also available.

Guests can enjoy international dishes prepared by master chefs at the Marco Polo Restaurant. A Swedish breakfast, including home-made pastries and bakery products is served each morning.

In the Salute Per Aqua SPA, guest can enjoy the city views from the terrace or unwind with a relaxation treatment. Complete business services, including 3 conference rooms, car rental service and transfer services, can also be provided upon request.



Hotel Capitolina 3*

single room: 47 euro/night, BB

double room: 59 euro/night, BB



Hotel Capitolina is situated in Cluj-Napoca's centre, a 15-minute drive from the airport and a 5-minute walk from the bus station and the National Theatre. All rooms come with free Wi-Fi.

The comfortable rooms at Capitolina Hotel are equipped with individual air-conditioning units, safety deposit boxes and minibars. Each room has a flat-screen cable TV and free newspapers are delivered to the room every morning.

A rich buffet breakfast is available and includes fresh fruit, juices, coffee and tea, croissants, cold meats and cheese, eggs, yoghurts and traditional Romanian dishes.

Indicații de orientare Locațiile mele

A Universitatea Babeș-Bolyai, Cluj-Napoca
B Hotel Capitolina, Strada Victor Babeș, Cluj-Na

Ați dorit să scrieți altceva: Hotel Capitolina, Strada Victor Babeș, Cluj-Napoca

Adăugați o destinație - Afișați opțiunile

OBȚINEȚI INDICAȚII

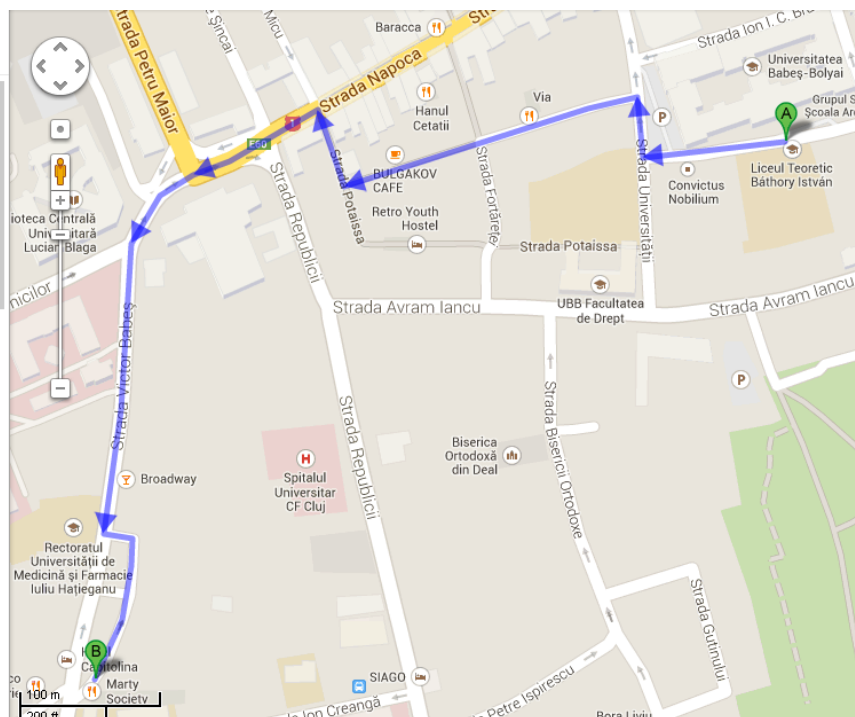
Indicațiile de mers pe jos sunt în versiune beta.

Fii precută(ă) – Este posibil ca trotuarele și pasajele pietonale să lipsească din acest traseu.

Trasee sugerate

Strada Inocențiu Micu Klein	950 m, 13 minute
Strada Avram Iancu	1,0 km, 14 minute
Strada Republicii	1,1 km, 14 minute

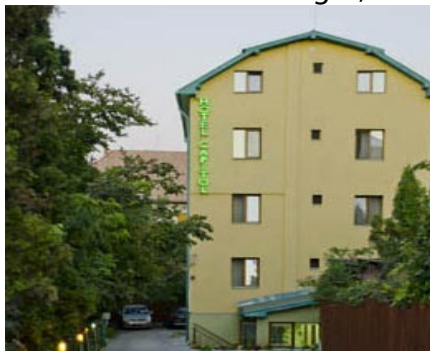
Indicații pentru mers pe jos către Hotel Capitolina Hotel



Hotel Capitol 3*

single room: 39 euro/night, BB

double room: 50 euro/night, BB



Hotel Capitol is situated in a quiet and green courtyard in the very centre of Cluj-Napoca. It offers nicely furnished rooms with free Wi-Fi internet access and air conditioning.

The smoking or non-smoking rooms feature thermally and acoustically isolated windows and cable TV with 50 channels.

The Capitol is a 15-minute drive from the airport and a 3-minute walk from the Botanical Garden. It is also close to diverse restaurants, bars and clubs.

The hotel provides its own parking place in the courtyard, which is being closed during the night.

Indicații de orientare Locațiile mele

A Universitatea Babeș-Bolyai, Cluj-Napoca

B Hotel Capitol, Strada Ion Creangă, Cluj-Napoca:
Adăugați o destinație - Afișați opțiunile

OBȚINEȚI INDICAȚII

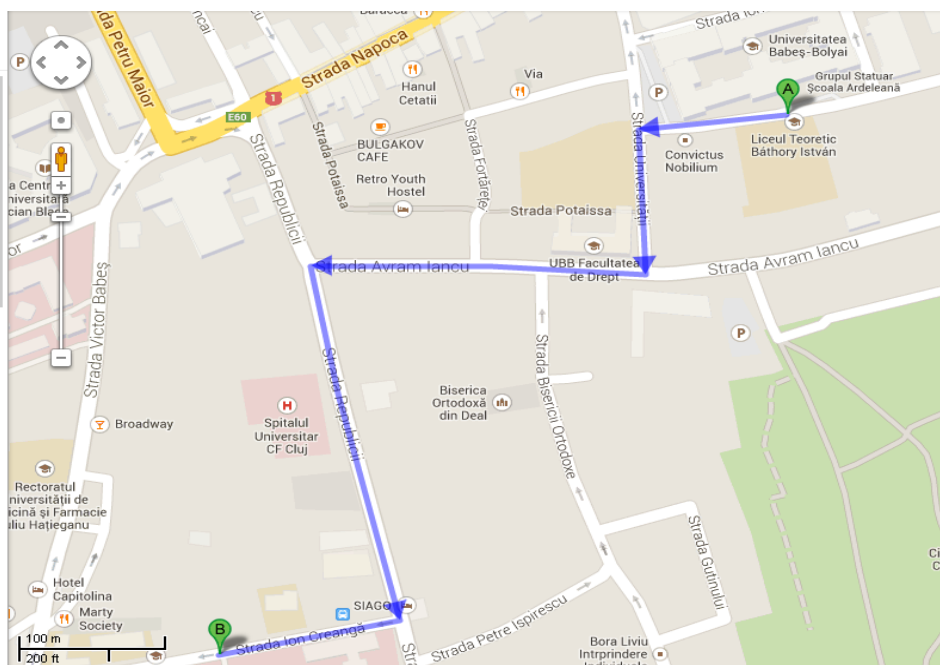
Indicațiile de mers pe jos sunt în versiune beta.
Fiți precaut(ă) – Este posibil ca trotuarele și pasajele pietonale să lipsească din acest traseu.

Trasee sugerate

Strada Republicii și Strada 850 m, 12 minute Ion Creangă	
Strada Ion Creangă	850 m, 12 minute
Strada Republicii	1,0 km, 14 minute

Indicații pentru mers pe jos către Hotel Capitol

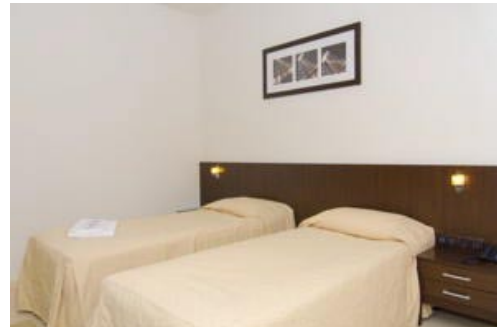
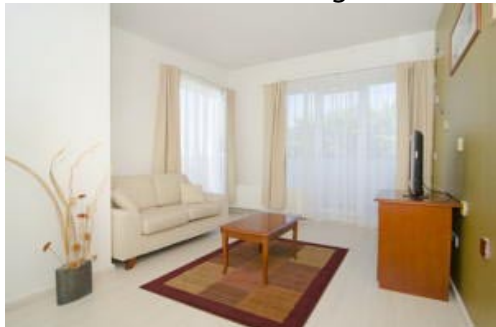
A Universitatea Babeș-Bolyai
Strada Mihail Kogălniceanu 1



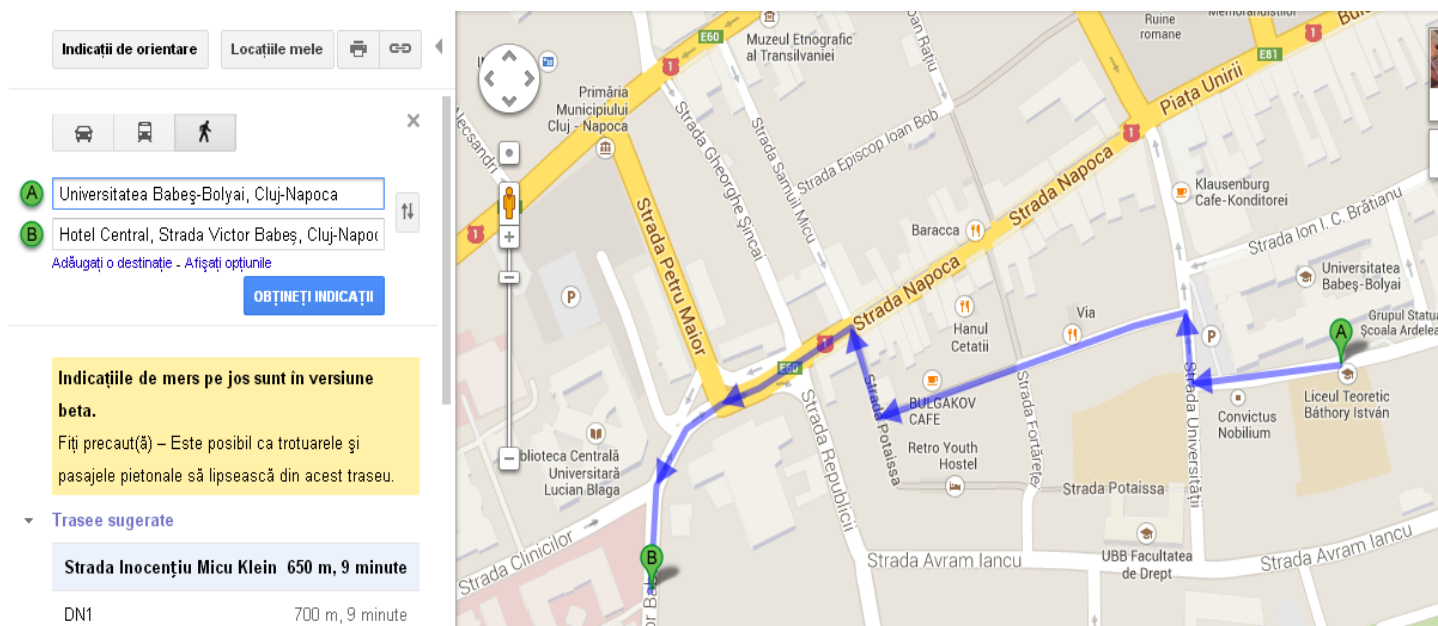
Hotel Central 3 *

single room: 44 euro/night, BB

double room: 52 euro/night, BB



Quietly located within 500 metres from the Botanical Garden in Cluj-Napoca, Hotel Central offers bright and spacious rooms with air conditioning, flat-screen cable TV, bathroom with shower and hairdryer. The Cluj-Napoca Airport is 6 km away and the train station is 3 km away. The Memorandumului bus stop is 250 metres and offers connection to the train station. Saint Michael's Cathedral is a 2-minute walk away and the Central Park can be reached on foot in 5 minutes.



Hotel Fullton 3*

single room: 47 euro/night, BB

double room: 51 euro/night, BB



Fullton Hotel is a modern building, situated in a strategic location, in a quiet place in the center of the town, 15 minutes from the Airport and 5 minutes from the train station.

Careful to your needs, Fullton is offering you a three stars services package: accommodation, bar and café, club and conference room. All the rooms have external phone line and internet connection.

Indicații de orientare Locațiile mele

A Universitatea Babeș-Bolyai, Cluj-Napoca
B Hotel Fullton, Strada Sextil Pușcariu, Cluj-Nap
[Adăugați o destinație - Afișați opțiunile](#)

OBTINEȚI INDICAȚII

Indicațiile de mers pe jos sunt în versiune beta.
Fiți precauți(ă) – Este posibil ca trotuarele și pasajele pietonale să lipsească din acest traseu.

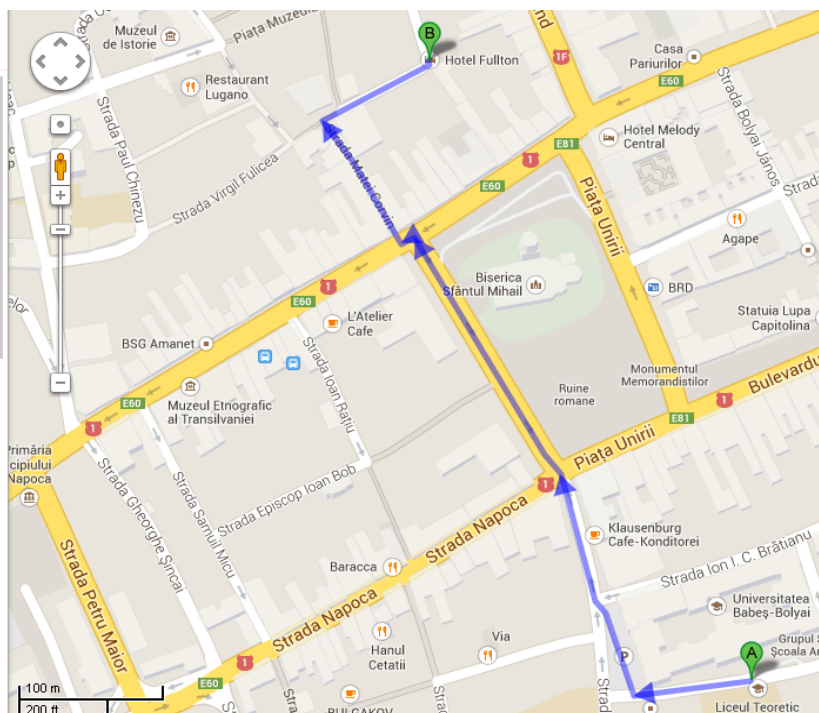
▼ **Trasee sugerate**

Traseu	Distanță / Durata
Piața Unirii	650 m, 8 minute
Piața Unirii și E81	850 m, 11 minute

Indicații pentru mers pe jos către Hotel Fullton

Universitatea Babeș-Bolyai
Strada Mihail Kogălniceanu 1
Cluj-Napoca 400084

1. Mergeți spre vest pe Strada Mihail



Hotel Transilvania 3*

3* single room: 38 euro/night, BB

3* double room: 44 euro/night, BB

2* single room: 33 euro/night, BB

2* double room: 40 euro/night, BB



Benefiting from a central position on the oldest street of Cluj-Napoca, the historical Hotel Transilvania offers cosy rooms with wooden floors and private supervised parking.

The restaurant as well as the bar provides a rich offer of meals and beverages. In the summertime you can dine outside on the pleasant terrace.

Indicații de orientare Locațiile mele

A Universitatea Babeș-Bolyai, Cluj-Napoca

B Hotel Transilvania, Cluj-Napoca, Cluj

Ați dorit să scrieți altceva: Hotel Transilvania, Cluj-Napoca, Cluj

Adăugați o destinație - Afișați opțiunile

OBȚINEȚI INDICAȚII

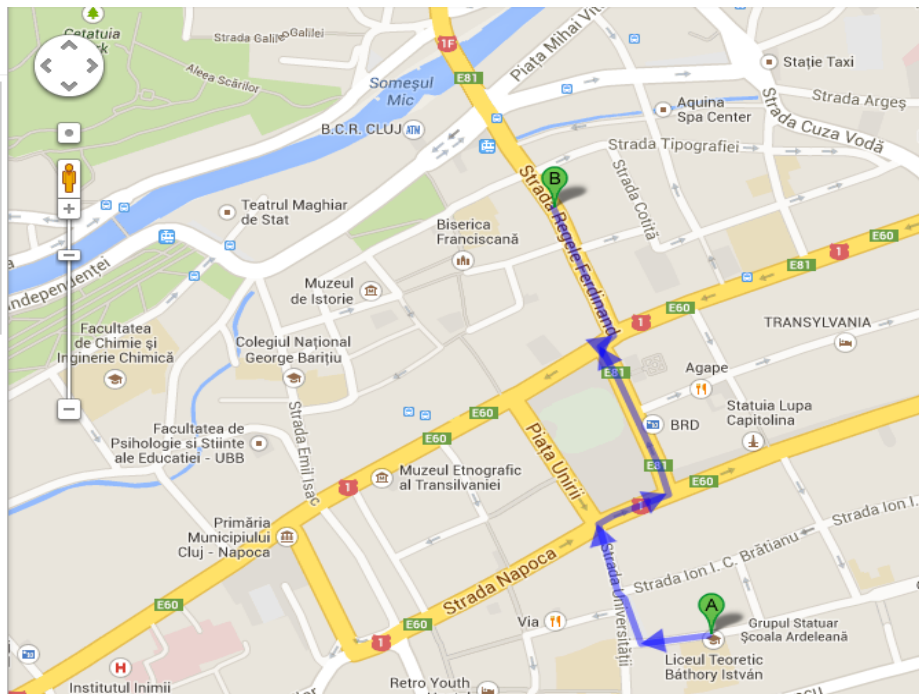
Indicațiile de mers pe jos sunt în versiune beta.

Fiți precaut(ă) – Este posibil ca trotuarele și pasajele pietonale să lipsească din acest traseu.

▼ **Trasee sugerate**

Piața Unirii și E81	750 m, 9 minute	
Piața Unirii	850 m, 10 minute	
E81	950 m, 11 minute	

Indicații pentru mers pe jos către Hotel



Hotel Victoria 3*

single room: 32 euro/night, BB

double room: 41 euro/night, BB



Hotel Victoria is situated in the historical centre of Cluj-Napoca and it offers accommodation with free WiFi internet access and cable TV.

The Victoria serves a rich breakfast buffet and the restaurant offers international cuisine, vegetarian and traditional Romanian cooking.

The reception is open 24 hours and private parking is available on site, free of charge.

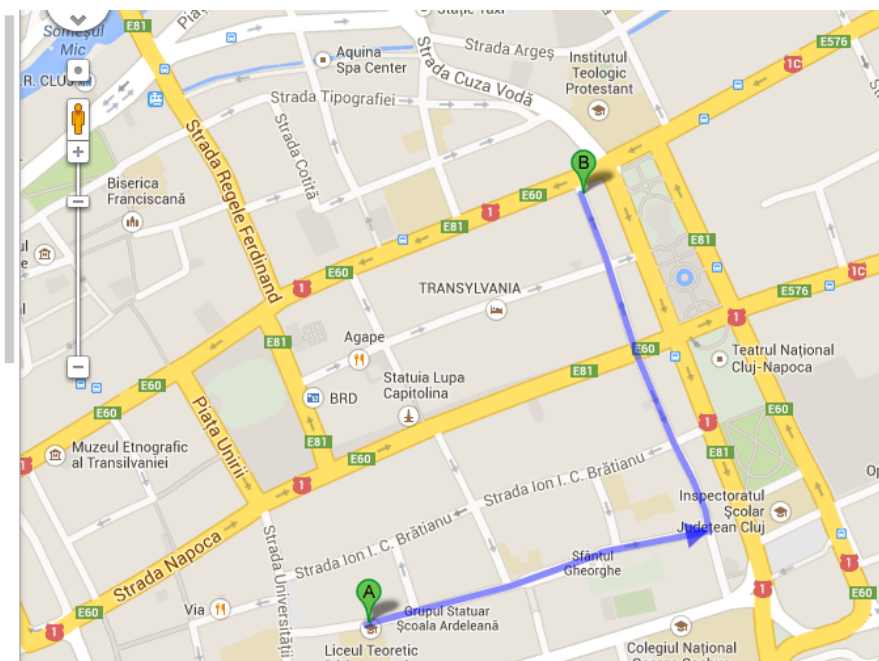
A Universitatea Babeș-Bolyai, Cluj-Napoca
B Hotel Victoria, Strada Baba Novac, Cluj-Napoca
 Adăugați o destinație - Afișați opțiunile

OBTINEȚI INDICAȚII

Indicațiile de mers pe jos sunt în versiune beta.
 Fiți precaut(ă) – Este posibil ca trotuarele și pasajele pietonale să lipsească din acest traseu.

Trasee sugerate

Strada Mihail Kogălniceanu și Strada Baba Novac	900 m, 11 minute
Strada Ion I. C. Brătianu și Strada Baba Novac	850 m, 10 minute
Bulevardul Eroilor/DN1/E81	900 m, 10 minute



Hotel Meteor 3*

single room: 31 euro/night, BB

double room: 40 euro/night, BB



Hotel Meteor is located on a pedestrian street in the centre of Cluj-Napoca close to the Opera and the Babes-Bolyai University and offers you free Wi-fi in the entire building.

All rooms and suites in the Meteor hotel are air-conditioned and have a cable TV.

The restaurant serves Romanian and international cuisine. It has 2 summer terraces as well as 2 separate salons, which are available for private and company events.

Indicații de orientare Locațiile mele

☒ A Universitatea Babeș-Bolyai, Cluj-Napoca
☒ B Hotel Meteor Cluj Hotel, Bulevardul Eroilor, Clt

Adăugați o destinație - Afișați opțiunile

OBȚINEȚI INDICAȚII

Indicațiile de mers pe jos sunt în versiune beta.

Fiți precauți(ă) – Este posibil ca trotuarele și pasajele pietonale să lipsească din acest traseu.

Trasee sugerate

Strada Mihail Kogălniceanu, Strada Hermann Oberth și Bulevardul Eroilor/DN1/E81	500 m, 6 minute
Bulevardul Eroilor/DN1/E81	450 m, 5 minute
DN1	600 m, 7 minute

Indicații pentru mers pe jos către Lb Meteor Srl